



## READ THIS FIRST!

[Download this form in color at [http://humanurehandbook.com/store/downloads/Read\\_This\\_First.pdf](http://humanurehandbook.com/store/downloads/Read_This_First.pdf)]

## CONGRATULATIONS ON YOUR PURCHASE OF A LOVEABLE LOO®!

### A BRIEF INTRODUCTION TO COMPOST SANITATION

Most toilets have historically been disposal systems. “Human waste” is dumped, flushed, piped or otherwise discarded, often resulting in water pollution, environmental pollution, and certainly resulting in a waste of agricultural resources. In the 21st century, many people now realize that all organic materials are recyclable, even those materials that go into toilets. By recycling organic materials, we can minimize environmental pollution and water usage while reclaiming agricultural nutrients to improve our gardens and farmlands.

Human body secretions and other toilet materials, including fecal material, urine, toilet paper, even vomit, are recyclable organic materials. With the Loveable Loo®, they can be collected in a convenient, pleasant, secure, private, and odor-free manner. Once collected, the organic material must be deposited into compost piles where it is converted by microorganisms into a safe, odor-free humus. The only toilet designed for this purpose is the Loveable Loo®.

Many “dry toilets” (toilets that don’t flush) are incorrectly referred to as “composting toilets.” These toilets are designed to dehydrate the toilet contents by means of urine diversion, vents, fans, drains, and external heat sources. The final product resembles compost, but is actually septage and should be handled as such. Dehydration toilets (dry toilets) do not eliminate pathogenic organisms. Composting does.

Composting requires three conditions: 1) an aerobic environment, 2) human management, and 3) the generation of internal biological heat. Humans pile organic materials above ground, in a contained bin, in such a manner that microbes proliferate, and in the process, generate internal biological heat. Dry toilets do not generate internal biological heat and therefore do not produce compost. They produce desiccated organic materials and they should not be referred to as “composting toilets.” Their finished product should not be called “compost.”

Composting does not take place inside the Loveable Loo® either. The loo is simply a collection toilet. The toilet contents must be composted at a separate location, in a compost bin. By adding the toilet materials to a compost bin, true composting can take place and the finished product will be true compost. The Loveable Loo® is a “compost toilet” because it’s part of a toilet system that does produce actual compost. The term “composting toilet” implies a toilet inside which composting takes place. Although the semantics may seem trivial, a compost toilet is any toilet that will produce actual compost. What are today referred to as “composting toilets” should be called “dry toilets” because they are not making compost.

In order for the Loveable Loo® to work correctly, you will need cover materials and a compost bin. If you don’t have carbon-based cover materials derived from plants, the loo will not work. Ashes and lime are not carbon-based and are not correct cover materials in a compost toilet. If you have suitable cover materials such as sawdust (or a variety of other materials) the loo can be located indoors, year-round, in an office, bedroom, or anywhere an odor-free toilet is needed.

The focus is on compost when a Loveable Loo® is used. People who grow plants can always use compost. If you have no use for compost, then you will have to find a use for it or else find someone who wants it or

someone who will collect your loo containers and make their own compost. Photos of some compost bins are shown at the end of this document.

The Loveable Loo® has been developed through nearly 40 years of trial and error, research and practice. It involves collecting toilet material before it comes into contact with the environment, recycling it via composting, then using the resulting compost for gardening or agricultural purposes. This creates a natural, unbroken cycle that replaces “waste disposal” with “organics recycling.” The Loveable Loo® is the only toilet that does not collect waste, nor does it dispose of anything. The Loo simply allows you to recycle the organic material that would otherwise be “flushed.”

Your humanure toilet can be used as an emergency toilet, a toilet in a camp, tent, garage, barn, shop, or as a full-time toilet in a residence. It can be located in any room (bedroom, office, closet) and is recommended for indoor use (unless you're camping). Do not allow it to freeze as the containers can split. The toilet will be odor free if used according to directions. The loo requires no water, no electricity, no vents, no urine separation, and no drains. A humanure toilet system is a knowledge-based system. Please read these brief instructions before using the toilet system. For more information, read the enclosed Humanure Handbook (and visit [HumanureHandbook.com](http://HumanureHandbook.com) when you get a chance for much more information).

### **WHAT YOU GET WITH YOUR LOVEABLE LOO®:**

- 1) The unassembled Loo;
- 2) Four five-gallon (20 liter) capacity green toilet receptacles;
- 3) A 20" backyard compost thermometer;
- 4) A 255 page Humanure Handbook, 3rd edition;
- 5) A plastic pail lid remover in case a lid gets stuck;
- 6) A “Read this First” condensed instruction sheet, which you are now reading;
- 7) A laminated “This is a Humanure Toilet” sheet for the toilet room;
- 8) A bag of parts for assembly, including an allen wrench and a small bottle of glue;
- 9) An oak finish toilet seat in its own box.

### **HOW TO USE THE LOO:**

1) Place a few inches of sawdust or other clean, somewhat dry, fine-grained, slightly moist, carbon-based organic material into the bottom of loo (NOT wood ashes or lime). “Carbon-based” means derived from plant cellulose such as from plant stems, fruits or leaves. Carbon-based materials are those that, if dry, will burn. The cover material can also be peat moss, rice hulls, sugar cane bagasse, and other similar materials.

2) Use the loo like any other toilet, but cover the contents (liquid or solid) with fresh cover material after every use. If you smell anything unpleasant, add more cover material.

3) When the toilet receptacle is about 3/4 full, open the loo (lift the hinged plywood top), place the lid on the toilet receptacle, lift out the receptacle and set it aside for composting. You do not have to push the lid on real tight; it only has to be tight enough to keep out insects. If its too tight, it will be hard to get off and you will have to use the plastic lid remover.

4) Insert an empty loo receptacle into the loo. Repeat from #1 above.

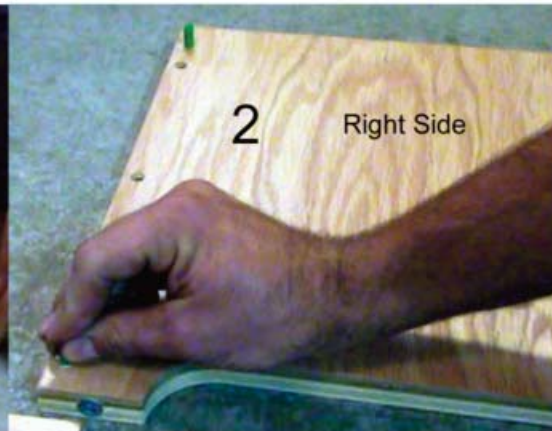
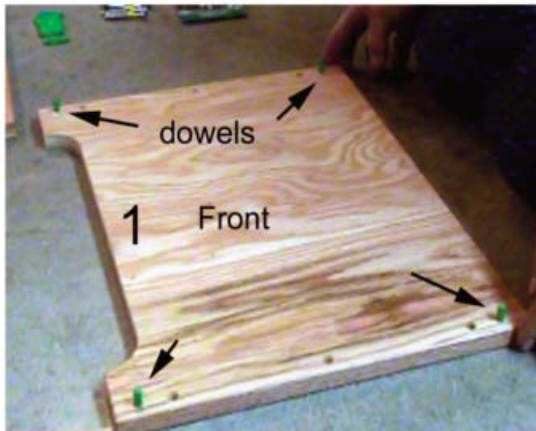
5) Empty the loo contents into an enclosed, contained, compost bin and cover thoroughly with hay, straw, weeds, grass clippings or other cover material. Alternatively, have the full loo receptacles collected by someone who will compost the contents for you. If you smell anything at your compost bin, you need more cover material. You can't use too much cover material in the bin because you will be raking open the cover material when you add new organic material to the bin, then raking the cover material back over the fresh addition.

Rinse the loo container with a small amount of water and pour the water into the compost bin. Add a drop of dish soap to the loo container and a little more water and scrub the loo container with a long-handled brush such as is available at Walmart and shown on page 4. Dump the soapy water into the compost bin. Give the container a final rinse and add that water to the bin as well. Cover the bin contents thoroughly. Add a few inches of cover material to the bottom of the clean loo container, put the rinsed lid back on, and return the loo container to the toilet room.

# Loveable Loo Assembly Instructions

You will need a standard slotted screwdriver. A 5/32 hex key is provided. The Loveable Loo body consists of 4 sides and a top. They are marked on the bottom F, B, R, L for front, back, right and left. They are fastened together by 14 green dowel plugs which will be pushed into the SMALL holes on the front piece, side pieces, and top back edges.

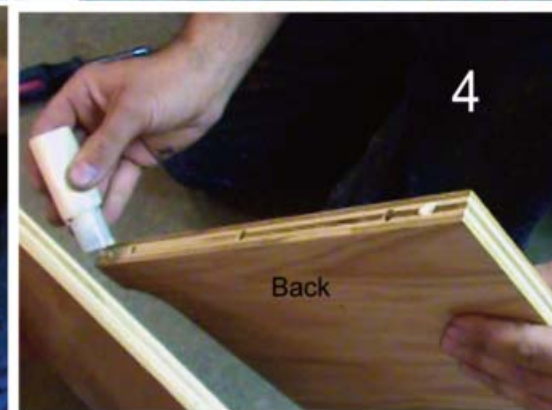
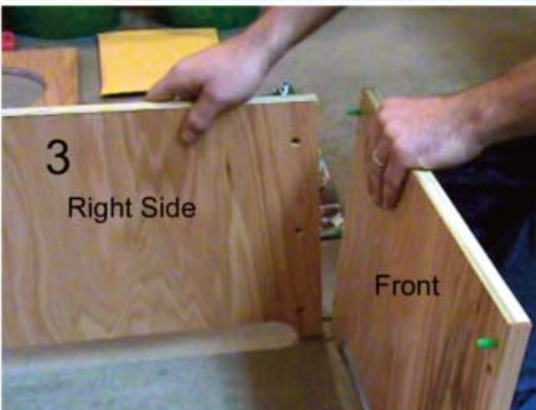
- 1) Put a drop of glue in the 4 small holes on the front piece. Push in 4 dowels tightly
- 2) Put a drop of glue in the two SMALL holes on the back of each side and insert dowel.
- 3) Put a drop of glue into the four SMALL holes on the FRONT EDGE of the side pieces. Insert the sides into the front.
- 4) Glue two SMALL holes on either side of back (4 holes). Insert back into sides.
- 5) Make sure outside of back has NO HOLES SHOWING!



6) Insert barrel-shaped nuts into the larger holes on the front and back. Insert bolts from outside of sides and front. Tighten with hex key.

7) Wipe off any excess glue with a damp rag.

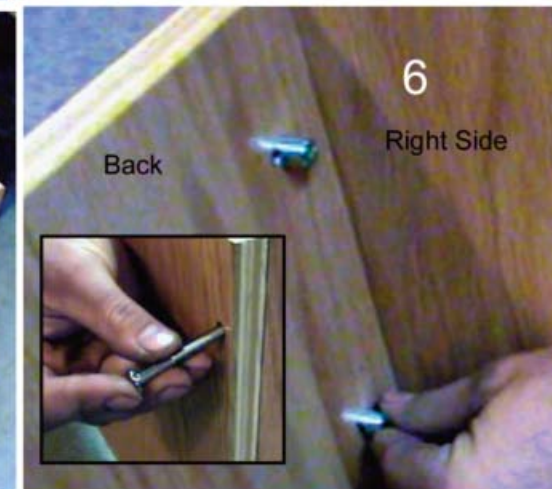
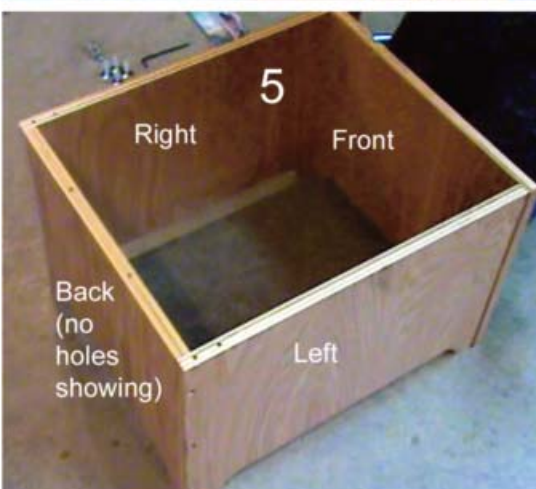
8) Drop glue into 6 small holes on top edges at back of loo. Insert dowels into these 6 holes.



9) Drop glues into 6 holes on underside of top. Set top into place, matching holes to dowels.

10) Insert feet.

11) Install toilet seat.



Watch an assembly video at [LoveableLoo.com](http://LoveableLoo.com)!

## TROUBLESHOOTING:

1) Unpleasant odor: You are not covering the toilet contents with adequate or correct cover material. The cover material should be in small enough particles that air cannot readily pass through. For example, wood shavings are not as effective as sawdust. It should also have enough moisture content that air flow will be blocked and beneficial bacteria will be encouraged. For example, sawdust from a carpentry shop has a low moisture content and is not as effective as sawdust from a sawmill that cuts logs into boards. Sawdust from saw mills is ideal because it is finely textured and slightly damp with tree sap. Kiln-dried carpentry sawdust may be too dry and may need to be left exposed outside in the rain to rehydrate or may need dampened with water. Wood shavings and chips have particles that are large and can let air through and odor may escape if you use these materials. Also, they are difficult for bacteria to break down in a compost pile. There is no need to separate or divert urine. You are making compost and compost piles love urine. All urine, fecal material and toilet paper are deposited into the toilet just like any flush toilet.

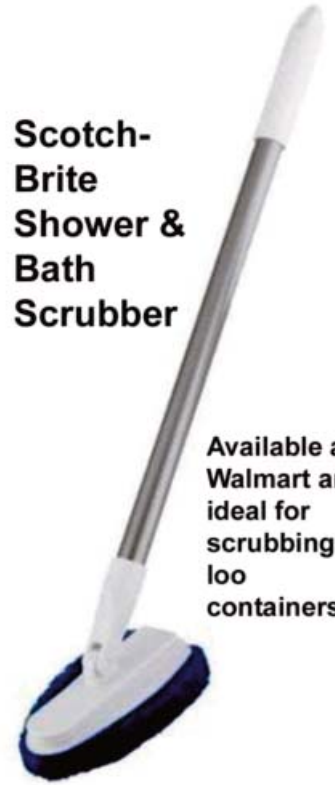
2) Fruit flies: Don't put food materials inside the loo during use. Once the loo is "full," place a lid on it and set it aside. You may then put food scraps into it. A "full" loo receptacle will still hold about a gallon of food scraps. The toilet receptacles are heavier to handle when filled like this, however, so keep this in mind. Fruit flies can hatch from eggs that exist in food materials such as citrus rinds and banana peels, especially when the loo receptacles aren't emptied in a timely manner. Although the receptacles can remain unemptied for months, they should be emptied monthly, but weekly is better. If they are not going to be emptied in a timely manner, store them out of doors (but not in freezing conditions).

3) Be conscientious about your composting. Make sure all loo rinse water goes into the compost pile. Make sure your bins are dog proof and well-covered. Make sure your compost pile is built on a "biological sponge" or thick layer of organic material under the pile. Always cover your compost pile liberally with hay, straw, weeds, leaves, grass or something similar, to block flies and prevent odor from escaping. If you smell odor or see flies visiting your compost pile, you are not covering it enough!

Do not turn your compost piles. There is no need to do so when the piles are located inside bins. Turning is needed only when you are composting open piles with exposed edges. Keep your thermometer inserted into the center of the pile at all times and pushed all the way down, if possible. This will give you an indication of the pile's microbiological activity. Don't worry if your compost piles are not heating up as hot as you think they should be. Temperatures may fluctuate seasonally, or even between compost pile "feedings."

NOTE: There is a message board and forum online with hundreds of questions and answers about humane toilets (<http://www.jenkinspublishing.com/messages/>). Please check it out. There are lots of instructional video clips at [HumanureHandbook.com](http://humanurehandbook.com) (<http://humanurehandbook.com/videos.html>) and plenty of other information there as well.

### Scotch-Brite Shower & Bath Scrubber



Available at Walmart and ideal for scrubbing loo containers.

# Humanure Compost Toilet System Condensed Instruction Manual

Copyright 2015, Joseph C. Jenkins. All rights reserved. This Manual may be copied and distributed freely under the following two conditions: 1) the information is not changed; 2) the source of the information is credited as follows: "Source: Joseph Jenkins, Inc., 143 Forest lane, Grove City, PA 16127 USA; HumanureHandbook.com." You can download this manual and translate it into any language and publish it online for free download without any additional needed permission.

**Read this manual online with included videos at:**

<http://humanurehandbook.com/manual.html>

**See all online humanure videos here:**

<http://humanurehandbook.com/videos.html>

**Get the book:**

<http://humanurehandbook.com/store/THE-HUMANURE-HANDBOOK.html>

**Download the entire book:**

<http://humanurehandbook.com/store/Humanure-Handbook-EBook.html>

**Read the book free online:**

[http://humanurehandbook.com/downloads/Humanure\\_Handbook\\_all.pdf](http://humanurehandbook.com/downloads/Humanure_Handbook_all.pdf)

**Foreign Versions:**

<http://humanurehandbook.com/foreign.html>

**Loveable Loo®:**

<http://humanurehandbook.com/store/LOVEABLE-LOO-Eco-Toilet.html>

## WHAT IS "HUMANURE"?

Humanure (human manure) is human fecal material and urine recycled for agricultural purposes via composting. Humanure contains valuable soil nutrients that enhance plant growth. For these reasons, humanure should be recycled whenever possible. Human excrement can be a source of environmental pollution and disease organisms when not recycled. When discarded into the environment as "human waste," it creates pollution and threatens public health. When recycled by composting, the pollution and health threats can be eliminated.

## HOW CAN HUMANURE BE RECYCLED?

Humanure can be recycled in two basic ways. First, it can be applied raw to agricultural land. In this case, humanure may be called "night soil." Unfortunately, raw applications of humanure to soil can create pollution and spread disease, so this method of recycling is discouraged and is in fact illegal in the USA.

The second method of recycling humanure is through a process called "composting." This is the process used by the Loveable Loo® system.

## WHAT IS COMPOSTING?

Composting is the managed, aerobic decomposition of organic material in such a manner that it develops internal biological heat. It is the feeding of humanure, food scraps and other organic materials to invisible organisms such as beneficial bacteria. Many compost organisms are too small to be seen, however, many of them can be seen. The larger ones include earthworms and many other tiny insects. Fungi also live in compost piles and they digest the tougher, woody plant materials.

## WHAT ARE ORGANIC MATERIALS?

Organic materials are those materials that came from recently living things such as plants and animals. Common organic materials include "toilet material," animal manures, sawdust, food scraps, weeds, leaves, grasses, wool, hay, straw, agricultural byproducts such as wheat chaff or residues from beer-making, vodka-making, cider presses, wine presses, distilleries and many other sources. A compostable organic material that is not from a recently living thing would be, for example, peat moss.

## HOW DOES ONE FEED THESE MATERIALS TO COMPOST ORGANISMS?

Organic materials are fed to compost organisms by creating a compost pile. A compost pile allows us to combine various organic materials above ground, thereby encouraging aerobic microorganisms inside the pile. It also allows us to keep the organic materials quarantined inside an enclosed area away from people, dogs, goats, chickens and other creatures that should not be disturbing the compost.

Compost microorganisms will digest and convert humanure into a safe and pleasant soil-like material when the humanure is combined with other carbon rich organic materials such as grass, leaves, sawdust, hay, sugar cane bagasse, rice hulls, straw, and other animal manures. Compost organisms do not like raw humanure because it is too wet and too high in nitrogen. But when combined with drier materials that are higher in carbon, such as the materials listed above, the compost organisms love to eat humanure.

## HUMANURE TOILETS

A humanure toilet is a collection device used to recycle organic materials. It is not a waste disposal device, as is a flush toilet. The Loveable Loo® may be the only toilet that does not collect waste. The purpose of a loo is to collect human fecal material and urine so that the collected toilet material can be recycled. When something is recycled, it is not wasted and should not be referred to as "waste" (which is why it is called "humanure" as opposed to "human waste"). Also collected in the toilet are toilet paper as well as paper tubes from the center of the toilet paper rolls. All urine is collected in the humanure toilet. Also collected in a humanure toilet are vomit (when sick), and baby diaper fecal material (scraped off the cloth diaper into the humanure toilet).

You should collect food scraps in a separate compost container and deposit them directly into the same outdoor compost bin. It is important to understand that the humanure compost should not be segregated from your food compost. Everything should be composted in the same pile! The enhances the health of the compost pile.

If you add food scraps to the humanure toilet while in use, you risk a fruit fly infestation. However, once the toilet receptacle has been removed from the toilet and set aside with a lid on it, you can put food scraps in it if you are going to empty it within a few days. There is still room for about 1 gallon of

food scraps in a full humanure toilet receptacle. Keep in mind that a 5-gallon toilet receptacle filled to the brim may be too heavy for some people to handle (it can weigh about 40 pounds or 18 kg).

The humanure toilet should be located in a private, comfortable setting, indoors year-round or outdoors in warmer climates, if desired (but not outdoors in freezing climates). When properly used, the humanure toilet will create no unpleasant odors. Therefore many people choose to place their toilet in or near their bedrooms, offices, bathroom, or in a basement, wherever it is most convenient, private and comfortable. Keep in mind that the toilets are best located where the receptacles can be easily removed to an outdoor compost bin.

## **HOW CAN A HUMANURE TOILET NOT CREATE BAD ODORS?**

When any foul smelling material is deposited into a humanure toilet, it is covered with a clean organic material in order to prevent odor, absorb moisture, and prepare the material for composting. This is how humanure is mixed with the other organic materials — by covering. No manual mixing, stirring, chopping or digging of the humanure or the compost is required, only covering. Therefore, the clean organic materials used in the toilet are called “cover materials.” The cover materials used in the toilet should have a somewhat moist (not wet or dry) and fine consistency. Sawdust from logs that are sawn into boards is ideal, but other materials can be used depending on what is locally available. Some people utilize rice hulls, coco coir, sugar cane bagasse, peat moss, rotted leaves, even shredded junk mail. Proper cover materials are absolutely essential to the successful operation of a humanure toilet.

## **CAN WOOD ASHES OR LIME BE USED AS A COVER MATERIAL?**

No. Wood ashes, coal ashes or lime (ground limestone) should NOT be used as cover materials in humanure toilets, nor should they be used for making compost. Compost organisms do not thrive on such materials. Clean wood ashes (wood ashes without plastic or other garbage) are good for the soil. They should be applied directly to the soil or saved in an outdoor pile or in a fire-proof container for later garden use, but not added to a compost pile. Microorganisms don't eat ash. In fact ashes can raise the pH of the organic mass and thereby hinder the reproduction of the microorganisms. The object is to encourage microbial growth, not to discourage it.

## **HOW LONG DOES IT TAKE TO FILL A 5-GALLON (20 LITER) CONTAINER?**

A 20 liter container will collect about one week's worth of human fecal material and urine, including cover material, produced by one average adult. The bigger you are and the more you eat, the faster the toilet receptacle will fill. If you're using an undesirable cover material in your toilet such as wood shavings, which are light and airy and will allow some odor to escape, your toilet will fill up faster because you have to use more cover material than is normally used. Human excrement is mostly liquid. The liquid will fill in the spaces between the cover material as the toilet container fills up. In fact, you can use the Loo as a urinal and only collect urine in it. When using a humanure toilet, a clean layer of cover material should be kept over the toilet contents at all times! The simple rule to follow is this: if the toilet contents have an odor, add more cover material until there is no odor.

## **HOW IS THE HUMANURE COMPOSTED?**

The collected toilet material is taken to a compost bin and added to the bin's contents. If a single adult were using a humanure toilet with a proper cover material, he or she would have to empty ap-

proximately one 20-liter toilet receptacle once a week. For an average family of four, four toilet receptacles would have to be emptied per week, which can be done all at once. For every 20 liter container of toilet material taken to a compost pile, a roughly equal container of organic cover material will be necessary to bring back into the toilet room. The task of household humanure composting should be conducted by a willing and dedicated person who is experienced, reliable and responsible.

The rule is to add organic material INTO the compost pile, not ONTO the pile. You always pull the cover material layer aside from the top of your compost pile, open up the compost underneath (use a manure fork, shovel or similar tool), add toilet material into the depression, pull the compost over the fresh material, rake the cover layer back over everything, then add more cover material as needed.

### **IS ONE TOILET RECEPTACLE ENOUGH?**

No. For best results, a humanure toilet should be equipped with several receptacles, all of which have lids and all of which are exactly the same size and shape. When one receptacle is filled, it is removed from the toilet, covered with a lid, and set aside in a non-freezing location (it's impossible to empty frozen containers, plus they can split and leak if frozen). A clean, empty receptacle is then set inside the toilet to replace the one that has been removed. Once the second receptacle is filled, it is also removed, covered and set aside, etc. You can do this with any number of receptacles. The full receptacles can be immediately taken to a compost area or just set aside somewhere for composting later. They do not take up much room. It is important that the toilet is ready and available for use at all times. You do not want all of your toilet receptacles to be full when someone has to use the toilet.

### **WON'T THE TOILET CONTAINERS SMELL BAD AFTER THEY ARE EMPTIED?**

The toilet containers may smell bad. That is why they should be cleaned when they are emptied by using a long handled toilet brush, a little dish soap and water, or a hose or other form of water sprayer. It takes approximately 2 liters of water and a minute or two to clean one 20 liter toilet container. All water used to clean the compost receptacles should be deposited into the compost pile and never anywhere else. After emptying and cleaning toilet containers, the compost-maker should wash her or his hands.

Alternatively, you can put compostable plastic bag liners in your loo. When full, dump the liner and all into your compost pile. You do not have to break or puncture the bags. They will fall apart on their own when added to a pile. Bag liners are available at [HumanureStore.com](http://HumanureStore.com).

### **WHY PUT HUMANURE IN A COMPOST PILE?**

Humanure can constitute a threat to public health because it can contain disease organisms. Therefore, it must be kept isolated until it completes the composting process. It is unsanitary and illegal in most places in the USA to defecate into holes in the ground. Same for applying human excrement raw to soil. There are three basic rules of human sanitation: 1) human excrement should not come into contact with water; 2) human excrement should not come into contact with soil; and 3) you should always wash your hands after using a toilet or after adding toilet materials to a compost bin.

The purpose of the bin is to isolate and quarantine the humanure so that it does not come into contact with soil or water, nor can it be accessed by children or animals. Also, the bin elevates the humanure into an above-ground pile, which helps the compost organisms to have access to the oxygen they thrive on.



## **WHY WON'T THE HUMANURE COME INTO CONTACT WITH SOIL WHEN IT IS PUT INTO THE COMPOST BIN?**

A humanure compost bin should be built on a soil base. This allows soil organisms to enter the compost from underneath. Such organisms can include earthworms and many other small creatures and insects, all of which are good for the compost pile. When building a new bin, shape the floor on the bottom of the bin like a shallow bowl. Dig dirt out of the center and throw it around the edges. Before a compost pile is started, the bottom of the bin is filled with organic material to create a thick layer between the humanure and the soil. This 18" (.5 meter) layer will absorb liquids draining from the initial humanure deposits. This is called a "biological sponge." It can be made of loose grass, leaves, weeds, hay, straw, animal manures, etc., or a blend of such ingredients. Once the humanure begins to compost (this is indicated by internal heating of the compost pile and may take a few hours, days or weeks, depending on a lot of variables), the compost pile will then begin to absorb moisture and may even require watering in dry climates. Graywater can be used to keep the compost pile damp. The compost should always have the moisture of a wrung-out sponge, and can even be wet, which is why all urine is added to a compost pile. If it is too dry, the microorganisms lack motility, cannot thrive, and the organic material will not compost.

If the compost seems too wet, work in more cover material when adding wet organic material to the pile. As long as the pile is above ground and not under water, you don't have to worry about whether there is oxygen in the pile. There will be. Theoretically, the motility of compost organisms require a liquid medium. You could say they swim rather than walk. Therefore, a damp pile is essential, as the microorganisms will proliferate in the "biofilms" that coat the organic materials.

## **WHY WOULD IT TAKE TIME BEFORE THE COMPOST BEGINS TO WORK?**

The compost pile requires a certain amount of mass before it will start to compost and a certain amount of time for the compost organisms to multiply. That's why composting does not occur in the toilet receptacles, only in the compost bins. The amount of biological activity in the compost pile can be determined by monitoring the temperature of the compost using a compost thermometer. Some of the compost organisms generate heat during the composting process, especially in the initial stages. Some compost piles will be so hot you cannot put your hand inside the pile. The heat, however, is internal. Compost piles do not radiate heat and cannot effectively be used as a radiant heat source.

## **WILL THE COMPOST BIN SMELL BAD?**

When any toilet material is deposited into a compost bin, it must be covered to prevent odor. The same rule for cover material usage at the toilet is used at the compost bin: if it smells bad, cover it until there is no odor. The cover materials can include weeds, leaves, grasses, hay, straw, even scrap woolen or cotton materials, but should never include tree branches or thick, woody materials, including wood chips (compost organisms are not termites). Keep a cushion of cover material around the sides of the bin to prevent toilet materials from leaking out. The organic materials should be deposited into the center of the bin in a depression, then covered over with the cover material. A tool such as a shovel, rake, or hay fork should be kept at the compost bin for making the compost and it should not be used for any other purpose anywhere else.

When adding material to a compost bin, first rake open the cover material. Pull it to the sides to expose the compost underneath. Then, dig a hole into the center of the exposed compost by pulling the existing compost in all directions toward the edges of the bin using a rake, fork, shovel or compost tool. Dump your new organic materials into the hole. Rake the existing compost back over the new

material, then rake the cover material back over the compost. Add enough new cover material to keep a clean layer on top of the compost at all times. By following these directions, no food materials will be exposed to attract vermin such as dogs or racoons; nothing will smell; nothing will attract flies, and the humanure will be deposited directly into the active part of the pile where it belongs.

What about rain water? If humanure should not contact water, should we keep out the rain? Rain water is good for compost because it helps keep the compost moist. Once the compost starts working, it can absorb a lot of moisture. In areas where rain is excessive such as monsoon areas, it may be advisable to cover the compost during heavy rains. If the compost is subjected to excessive rain, it can leach liquids from the bottom of the pile. This is unlikely to occur under normal circumstances. However, in severe rain conditions a simple water-proof cover over the compost, such as a tarp, will prevent leaching. In dry climates the compost may need to be watered. Graywater can be used for this purpose. A heavy cover material layer (such as hay or straw) on top of the compost pile will absorb rain and prevent leaching. It will also prevent the compost from drying out in arid climates.

### **WHAT ABOUT FREEZING?**

If the compost pile gets too cold, it can stop working and go dormant. In very cold climates, it may freeze solid. How hot a compost pile gets and how long it stays hot is often a matter of how big it is and how much cover material is being used. The bigger piles get hotter and stay hotter longer. More cover material provides more insulation. Backyard compost piles tend to be approximately one cubic meter in size. They can freeze at this size during very cold weather, especially when not covered adequately and/or not fed regularly with fresh organic material. When the compost pile is frozen, it can still be added to. The material added to a frozen pile should be spread out to keep the pile somewhat flat in order to prevent a frozen mountain from developing in the center of the pile. It is best to keep cover materials dry in the winter months so they don't freeze. A bale or two of straw or hay, per family of four, per month, should provide sufficient cover material for use on the compost pile during the winter. A frozen compost pile will revive after it thaws out.

In addition, the cover materials used in the toilet itself should be kept from freezing. If sawdust is used as a cover material in the toilet, for example, a container of sawdust should be kept indoors and unfrozen at all times during the winter. A "wheelie bin" plastic garbage can is perfect for storing sawdust inside during the winter months, so long as it is stored where it won't freeze. A family of four can expect to use two wheelie bins per winter in northwestern Pennsylvania where it snows from November until April.

### **WHAT ELSE SHOULD BE PUT INTO THE COMPOST PILE BESIDES TOILET MATERIAL?**

All food scraps should also go into the compost bin. These can include meats, bones, fats, oils, vegetable peels, liquids such as spoiled milk or stale beer, tea bags, egg shells, hair, and anything else that is organic and produced by the household during food production and consumption. So can cotton sanitary napkins (although you will have to pick out pieces of plastic from the compost when it is finished). Small animal mortalities such as dead chickens, cats, racoons, possums, ducks or other creatures can be buried in a compost pile as well. Other animal manures, such as chicken manure, sheep manure, horse manure, goat manure, etc., can also be added to a compost pile. If you have large amounts of animal manures, such as from a herd of animals, much of the animal manure can be composted separately so your household humanure compost bin does not fill too quickly. It may be necessary to keep a wire cover on top of the compost pile to prevent dogs and other animals from climbing on top of the pile and disturbing the compost, although a thick cover material layer on top will deter most vermin.

## **WHEN SHOULD A COMPOST PILE BE STARTED?**

The best time to start a compost pile is in the mid-summer when the days are the longest and there is ample vegetation for creating a biological sponge and for cover material. The compost will start working more quickly during this time of year. Compost prefers fresh, green vegetable matter, so fresh leaves, weeds, grasses and sawdust are ideal for a compost pile. Later in the year, if the pile goes dormant and even freezes, there will be an adequate population of compost organisms already in the pile that will enable the pile to start working again in the spring. On the other hand, anytime a compost bin fills up and has no more capacity for additional organic material, a new bin can be started, even in the winter months.

## **HOW LONG DOES IT TAKE TO FILL A BIN?**

A standard humanure compost bin used by a family of four is about a cubic meter up to 1.5 meters square by 1.5 meters high. A bin of this size can hold the entire amount of organic material collected by the family over a year, including humanure, cover materials, food scraps, garden and yard materials. The reason a small bin of this size can hold so much material is because the organic material shrinks while it is composting. The compost organisms are converting the organic materials into a dense humus — a process that involves constant shrinking of the organic materials that are added to the pile. When composting for larger groups, larger bins will be needed, or a number of bins may be used. In cold weather if the compost is dormant or frozen, it will undergo no shrinkage and will fill more quickly. However, once it starts working again in the spring, it will again shrink. One misconception that many people have is that the bin looks full and they think they need a new bin when they don't. If the pile is active, it will be shrinking between additions of organic material. So it may look full, but you can still add a lot to it because it keeps shrinking.

## **IS THIS TRUE THAT A COMPOST PILE SHOULD BE TURNED PERIODICALLY?**

No, you do not need to disturb the compost pile other than to move the cover material from the top center of the pile and dig a small depression there when adding new material. Let the compost organisms do the rest of the work for you. Sufficient oxygen will be entrapped in the pile as you add compost materials. Digging, chopping and turning the pile is totally unnecessary and will disturb the compost organisms that have established their own layered populations. Just build the pile, patiently allow it to age, and then use the compost. It is a mistake to try to hurry the composting process. Composting requires patience. Composting is like an art. The practice of composting can be improved through experience and observation. There is much misinformation being circulated about backyard composting, often, ironically, by compost educators. To learn more about “compost myths,” read the Humanure Handbook.

The humanure composting methods outlined in this instruction manual involve “contained” composting. The compost is never left in an exposed pile. The compost is always collected only in bins and always covered. When someone piles organic material in an open pile, as was often done back when composting practices were first being developed (and is still done today in many places), the pile will stink, it will attract flies and it will need to be repeatedly turned. Open piles are usually not covered because the surface area is too large and it would take too much cover material. Also, open piles have large surface to volume ratios (there is too much surface relative to volume). This means the internal heat of the pile is unavailable to a large amount of the organic material on the outer surfaces. These piles must be repeatedly “turned” so that the outside is turned inward, allowing all parts of the pile to be subjected to the internal temperatures. Turning is a very labor intensive process and

totally unnecessary when containing the organic material in a covered bin. The notion that compost piles must be turned refers to the open piles, which is not what we're doing or recommending.

## **WHEN IS THE COMPOST READY TO BE USED?**

After the compost bin has been completely filled, it must be covered with a generous layer of clean cover material and left to rest, undisturbed, for approximately one year. This is the aging or curing stage of the compost and it is a very important stage. The amount of time the compost is allowed to age, undisturbed, is called the "retention time." During this time, nothing whatsoever should be added to the compost bin. During the retention time, the final decomposition of the organic material is taking place. This is often dominated by fungal organisms as well as larger organisms such as earthworms. The compost environment is an alien environment for human disease organisms and such "pathogens" are killed during the composting process. The retention time allows for an additional safety period. The compost will continue to shrink while curing.

Immature compost is "phytotoxic" or toxic to plants. It will kill plants. You do not want your compost to be immature. You may hear people saying how fast they can make compost — some say only a few weeks. Stay away from these people as they don't know what they're talking about. Let your compost fully mature. Allowing it to cure for approximately one year after the bin is filled is a good practice. Plants will start growing on your compost pile when it's fully mature. You can pull a sample of your compost out, put it in a jar and sprout a seed in it to test the maturity. Pumpkin or cucumber seeds work well for this purpose. Otherwise, after a year or so of aging, the compost will be ready. In tropical climates, the curing or retention time may be reduced to nine months. Use your compost thermometer and make sure the compost temperature has dropped to ambient (outside) air temperature before using it for agricultural purposes.

## **HOW SHOULD THE FINISHED COMPOST BE USED?**

The finished compost, after the retention time is complete, should look and smell like rich, dark, moist garden soil. It can be used to grow garden plants, trees, vines, shrubs and flowers. It can be used on top of the soil as a mulch, or dug into the soil for better root access for the plants. It can also be buried in holes where trees and shrubs are to be planted. Once the first batch of compost has been completed (which will require approximately a two year period — a year of collecting and a year of aging), a gardening household of four people can produce approximately one cubic meter of compost annually. In the interests of public health, all compost produced on a family plot should be used only on that plot. When compost is made and then transported off the property, or sold, the compost operation can be considered commercial, can be regulated, and can be subject to a host of statutory restrictions. This can be avoided by making and using your own compost.

## **HOW DO WE KNOW THE COMPOST IS SAFE TO USE?**

Finished compost should never be "sterile," but it should be sanitary. That means the compost should be teeming with beneficial microorganisms that do not pose a threat to human health. Any human disease organisms that may have been in the original organic material should have been eliminated, weakened, or greatly diminished by the time the compost has become mature. Finished compost can be tested for both the existence of pathogens as well as for agricultural quality (testing labs are listed in the Humanure Handbook). If a composter doubts the safety of the finished compost, the compost can be used for ornamental plants and flowers, for trees and bushes, or for food crops where the compost will not come into contact with the food and where the handling of the compost

will be minimized.

An alternative is to simply allow an additional year of retention time for the compost. Allowing additional retention time requires no energy and only a small amount of space. The additional retention time may contribute to the safety of the finished compost when the compost quality is in question (such as when the humanure has been collected from a population that suffers from confirmed diseases). Therefore, if the compost does not seem “finished” after a year of collection and a year of retention, allow it to age another year.

On the other hand, rather than let the mature compost sit another year, shovel it into holes in the ground and plant something on it. Wear gloves and wash your hands afterward. A healthy household that composts its own humanure does not need to be overly concerned about the safety of the finished compost if the instructions in this manual are followed. On the contrary, by composting humanure rather than disposing of it into the environment, long-term public health and safety can be improved, the environment can be protected, and the finished compost can provide soil fertility.

## **ACQUIRING THE COVER MATERIALS**

Without proper cover materials in adequate quantities, the humanure compost toilet will not work. An individual family can usually find cover materials by locating local sawmills or sawdust sources, purchasing peat moss in compressed bags, buying hay or straw from a farm or farm supply store, scavenging materials from the local environment such as leaves, grasses and weeds, or getting leaves from the local municipality after they’ve been raked up in the fall. Some municipalities sweep up leaves then dump them into piles where they’re left to rot. Rotted leaves are ideal for humanure toilets. Contact your municipality to see if such a source of organic material is available to you. Avoid wood chips or wood shavings as these do not compost well.

Cover materials should not be wet. They should have a basic carbon content from stems and leaves and other plant cellulose byproducts. Again, the simple rule when using cover material is if the compost that is covered smells unpleasant, it needs more cover material. Cover until there is no bad odor.

## **HOW TO BUILD A COMPOST BIN**

A simple compost bin is four pallets set on edge and tied together in a square. More permanent bins involve posts and boards (see page 15). If the top of the compost is accessible to chickens, dogs, etc., it can be covered with wire mesh will prevent the compost from being disturbed. A square piece of loose wire fence is easily removed when adding compost to the pile. The compost bin itself can be built from pallets, scrap wood, wire mesh, stacked bales of hay or straw, other recycled materials, or even masonry materials such as block, brick or stone. Do not use lumber that is treated with chemicals.

A humanure toilet system can be used in the same location for generations. The most serious composters will construct a permanent bin. A minimum three bin system is recommended. One bin is filled for a year and then left to age. Another bin is filled for a year while the first bin ages. The first bin is gradually emptied as the second bin nears filling. By the time the second bin is full, the first bin is empty and the cycle starts again. The central bin is used to store cover material, which must be kept dry so it won’t freeze in the winter. A roof over the third bin can be used for rain water collection, with the water being conveniently used for cleaning compost toilet receptacles. A water collection system must be drained during freezing weather.

## COMPOST TOILET COLLECTION FOR CENTRALIZED COMPOSTING

An alternative to individual “backyard” humanure composting is centralized composting at a compost facility operated by a government agency, a private enterprise, an agricultural collective, a farm, or even by a friend or neighbor. In such a scenario, the humanure toilet receptacles, full and covered with snug lids, are collected from homes, toilet stalls and even apartments, perhaps daily or weekly, and are taken to a composting site.

Such systems have been employed throughout the USA at various venues such as music festivals and other gatherings where humanure is collected on a daily basis and composted on-site along with food scraps and other organic material. The toilet users are not the composters. The collection and composting is done by a trained crew. Video footage of such systems can be seen at [Humanure-Handbook.com](http://Humanure-Handbook.com).

## COMPOST TOILET TRAINING PROGRAMS

When humanure toilet compost systems are being employed by individuals on a large scale in a village setting, it is important that the individuals undertake a training program prior to starting their composting systems. This training program should include being required to read and understand a manual such as this one, being required to watch an instructional video showing a successful existing humanure compost system in operation, and attending a toilet building workshop, a compost bin building workshop, or a compost usage workshop. These training programs could be conducted by local NGOs, local government agencies, or by local private enterprise.

## OPPORTUNITY FOR COTTAGE INDUSTRIES

When valuable materials are discarded as waste, they create a drain on the revenues of society. When valuable materials are recycled, they allow us to reclaim wealth. The recycling of humanure on a large scale can create small businesses. These could include toilet making businesses, compost bin construction and erection businesses, and compost-making businesses. The finished compost can enhance local agricultural production. The finished compost can also be a valuable salable commodity. Therefore, humanure compost toilet systems can provide an opportunity for the creation of new, small businesses.

**Read this manual online with included videos at:**

<http://humanurehandbook.com/manual.html>

**See all online humanure videos here:**

<http://humanurehandbook.com/videos.html>

**Get the book:**

<http://humanurehandbook.com/store/THE-HUMANURE-HANDBOOK.html>

**Download the entire book:**

<http://humanurehandbook.com/store/Humanure-Handbook-EBook.html>

**Read the book free online:**

[http://humanurehandbook.com/downloads/Humanure\\_Handbook\\_all.pdf](http://humanurehandbook.com/downloads/Humanure_Handbook_all.pdf)

**Loveable Loo®:**

<http://humanurehandbook.com/store/LOVEABLE-LOO-Eco-Toilet.html>



**EXAMPLES  
OF COMPOST  
BINS**